

# GM46T(Matter) Mini & Hidden Curtain Motor User Manual

Please read this manual carefully before using the product!

Edition:1.0

## Cautions



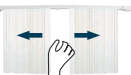
No entry into water



Do not disassemble



Do not plug in before completing installation



After installation, do not forcefully pull the curtain



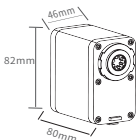
Do not strike, collide and fall



Use after firmly installing

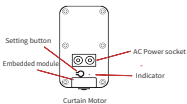
## Functions

Soft start(Cancelable)+stop when blocking + electric stroke +slow start and stop + overtime protection+ remote control + reset + reverse setting +speed regulation + dry contact (optional)+Tuya/Smartlife control(optional)



Rated voltage: AC90-240V 50/60Hz  
Working temp: -5°C~45°C  
Rated Power: 18W  
Rated torque: 1.5N·m  
Noise: <35dB  
Speed: 14cm/S  
Overtime protection: 4min  
Protection grade: IP41  
Insulation class: E  
Remote: 433.92Mhz  
Zigbee: 2.4GHz  
APP: Tuya smart/Smartlife

## Power wiring



AC Power cable

Note:

- Make sure the connection between power cable and socket is tight;
- Select a plug style that is suitable to your local power socket.

## Module plug-in design



Standard interface and specifications



Easy to switch to other modules



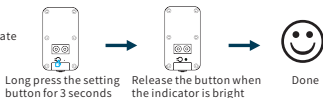
Hot-swap and Fast plug-in



Secondary development and customization

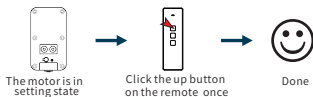
# Settings

## Enter the setting state

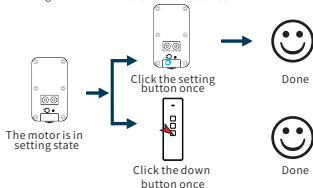


**!**  
The setting state goes out within 10 seconds if there is no other operation !

## Learn code



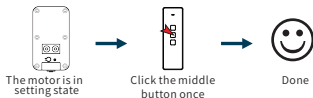
## Reverse Settings



**!**  
● It is effective only when the the remote in use has been learned!

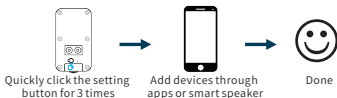
● The working direction of all the controls will be reversed after setting!

## Soft start

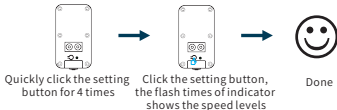


**!**  
It is effective only when the the remote in use has been learned!

## Motor networking



## Speed setting

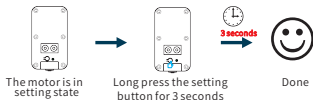


**!**  
● The indicator goes out in 6 seconds automatically if there are no more operations.

● 3 levels are settable.

● Default speed level is 2.

## Reset (Clear Code)



## Smartlife (Wi-Fi)

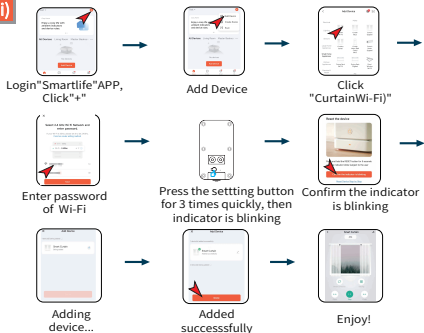


### Optional function

Control by Google assistant or Amazon Alexa after bounding the ID with Google or Alexa.



Scan and get Smartlife



## Smartlife (Zigbee)



### Optional function

● Make sure the Zigbee gateway has added in the APP.

● Control by Google assistant or Amazon Alexa after bounding the ID with google or Alexa.

