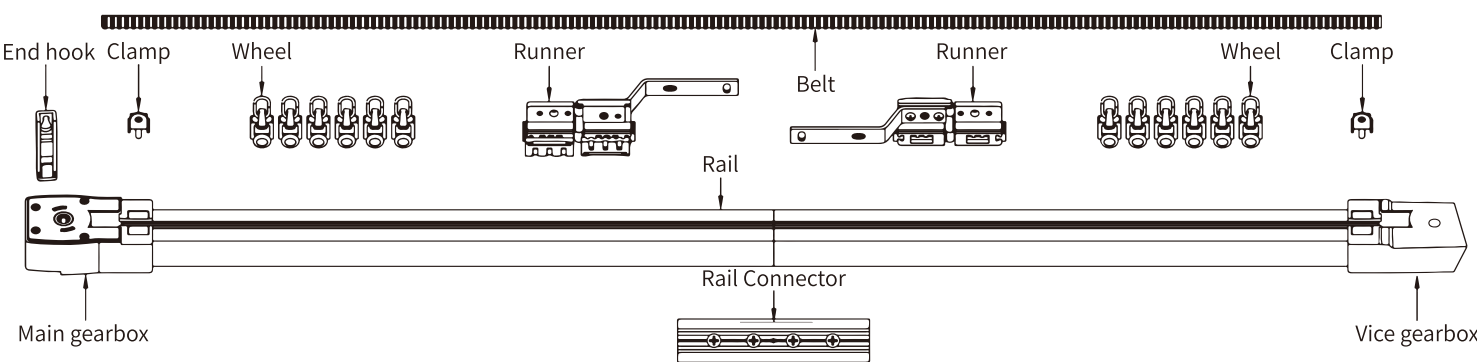
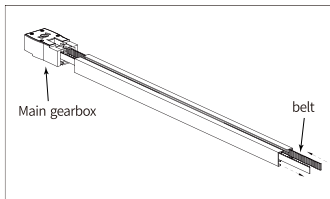
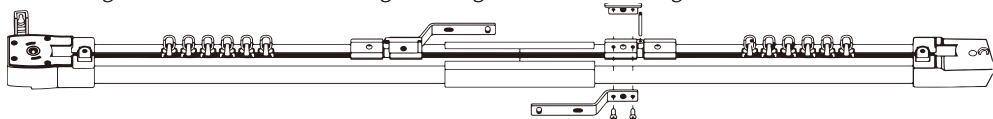


Rail exploded view

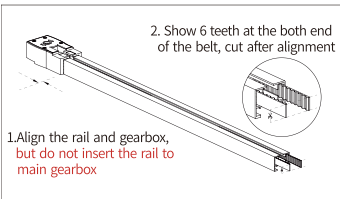


Rail assembling

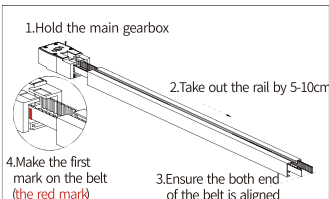
Cutting dimension of rail=Total length-Main gearbox 69mm-Vice gearbox 48mm



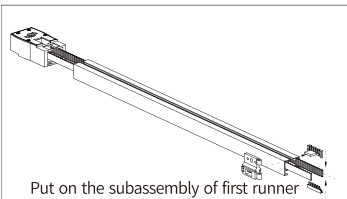
1, Pass the belt through main gearbox



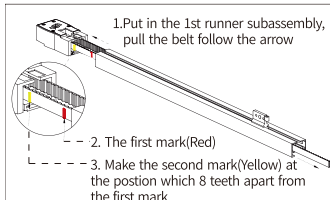
2, Cut the belt



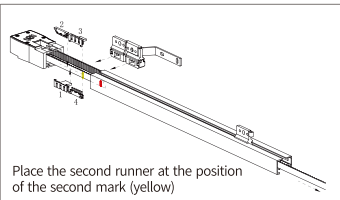
3, Make the 1st mark on the belt



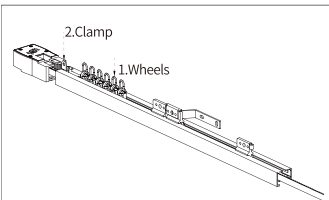
4, Place the first runner



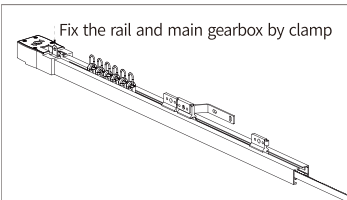
5, Make the second mark



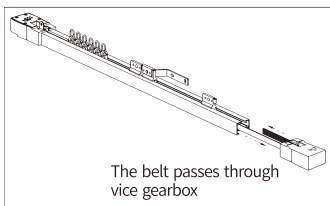
6, Place the second runner



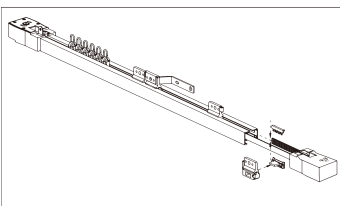
7, Place the wheels and clamp



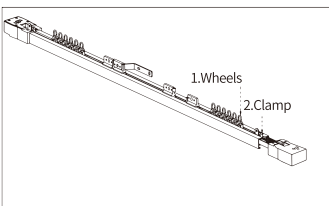
8, Fix the main gearbox



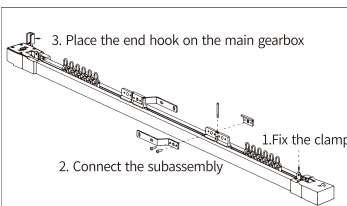
9, Place the vice gearbox



10, Put on the subassembly of the first runner



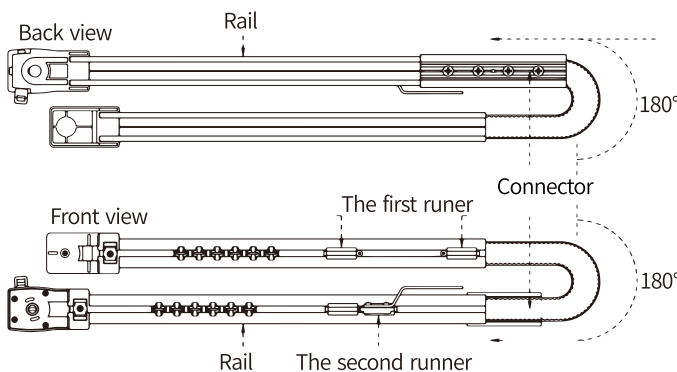
11, Place the wheels and clamp



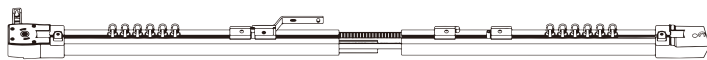
12, Fix the first runner and complete the assembling

Guidance for pre-assembly rail

1, Open the box



2, Join the rails by connector

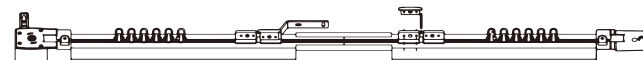


1. Align the rails and connect together

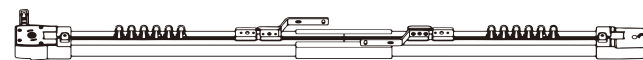


2. Fix the screws on the connector

3, Connect and fix the first runner on the rail



4, Put on the ceiling bracket and complete the assembling



OneSmart®

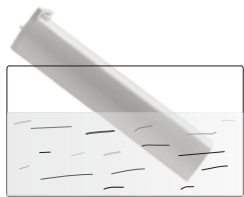
GM46D

Curtain motor  
CE RoHS

Manual for battery powered smart curtain  
please read this manual carefully before using the product!

Version:1.0

Cautions



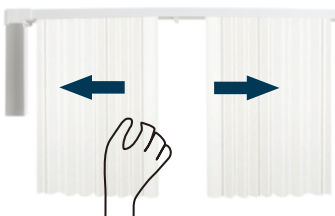
Keep dry



Do not disassemble



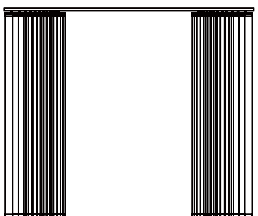
Keep away from heat sources



Do not pull too hard

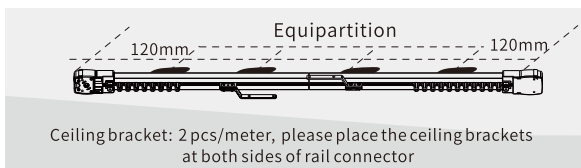
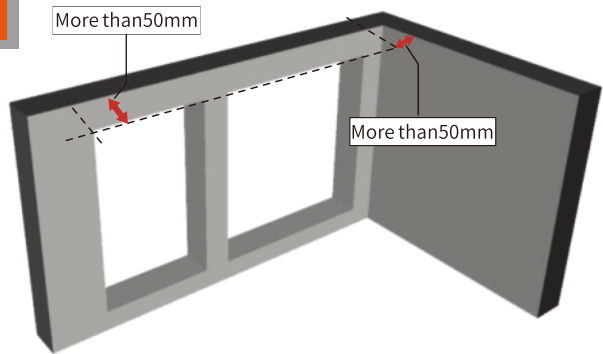


Do not strike, collide and fall



Use after firmly installing

Installation



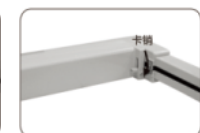
Ceiling bracket: 2 pcs/meter, please place the ceiling brackets at both sides of rail connector



Insert the drive shaft of the motor to the hole of the main gearbox



Rotate the motor to fit the gearbox



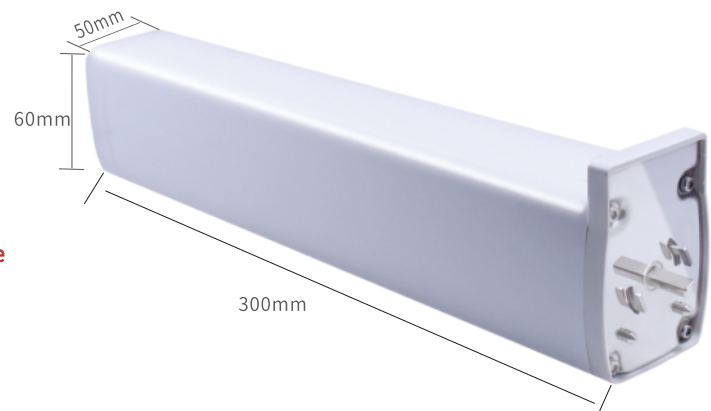
Push into the pin bar, the motor is fixed together with gearbox

Features

Soft start(cancelable) +stop when blocking +electric stroke +slow start and stop +overtime protection + overcharge protection + remote control + reset + reverse setting + low power alarm + anti-trigger + Tuya smart/Smartlife (optional)

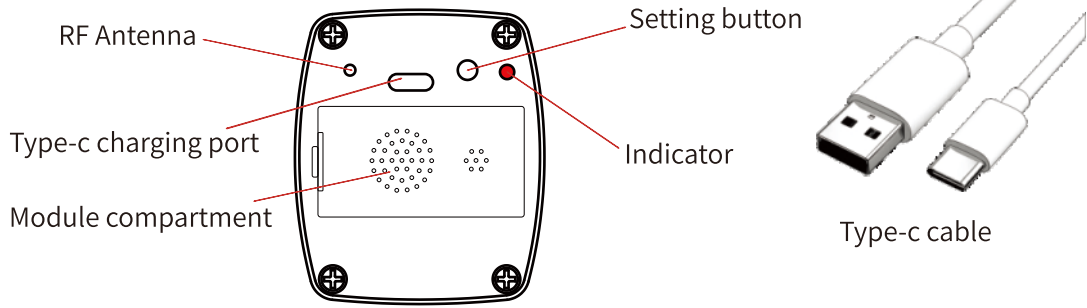


Battery Inside



Working voltage: DC 9-12.6V  
Charge voltage: 5V 2A  
Rated Power: 15W  
Battery capacity: 2000mAh  
Rated torque: 1.5N·m  
Working temp: 0°C~40°C  
Overtime protection: 4min  
Protection grade: IP41  
Insulation class: E  
Remote: 433.92Mhz  
Zigbee: 2.4GHz  
APP: Tuya smart/Smartlife

ChargingInstruction



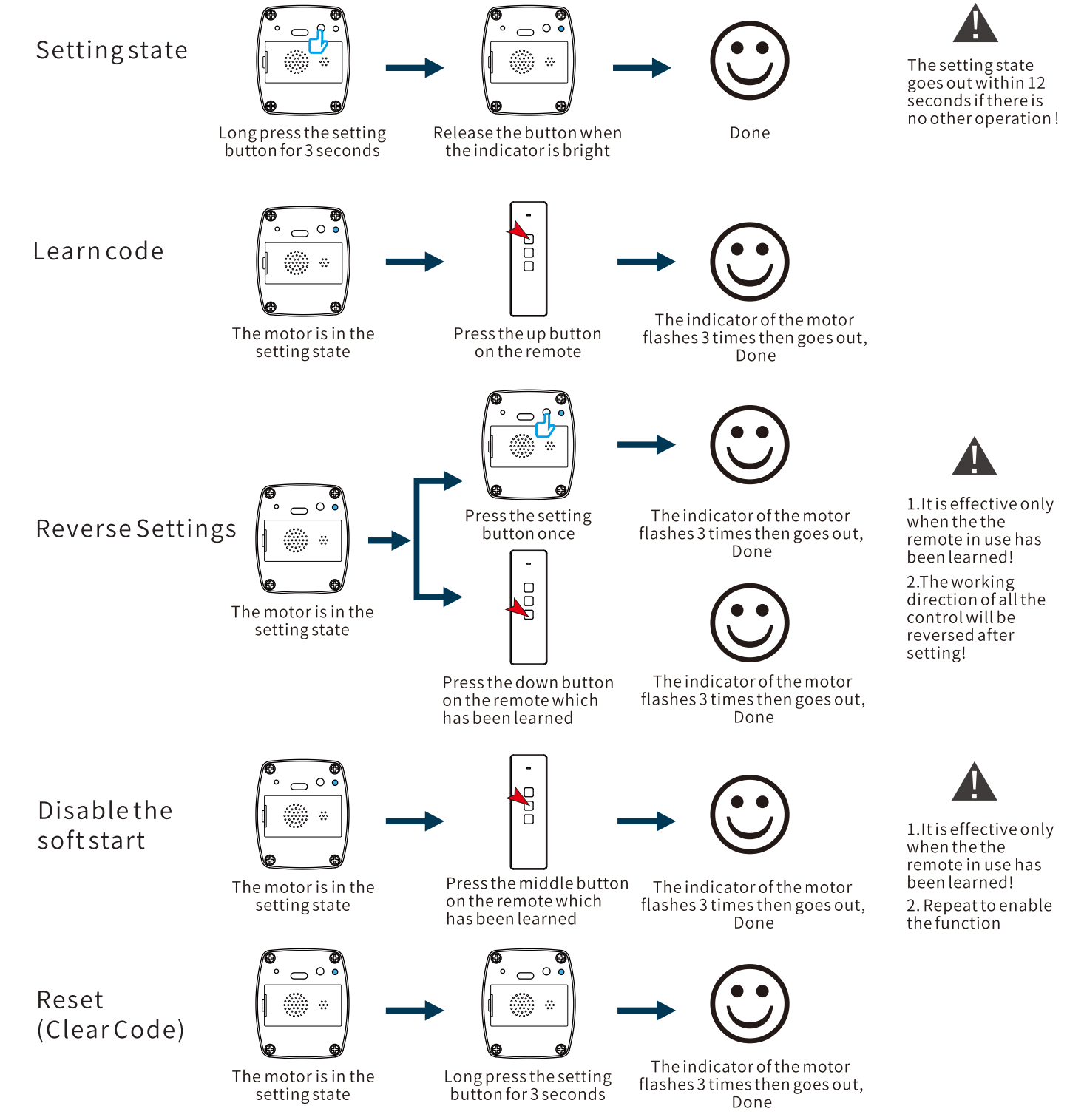
- 1. Most of the 5V phone chargers is compatible;
- 2. Fast Charge Protocol is not supported, but it also can be charged by fast Charger

Notes:

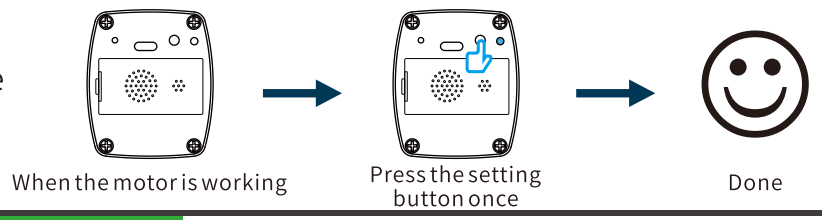
1. Please charge the motor with Type-C cable and make sure the output voltage of the charger is 5V;

2. The indicator of the motor is red when charging, and goes out when full charging

Settings



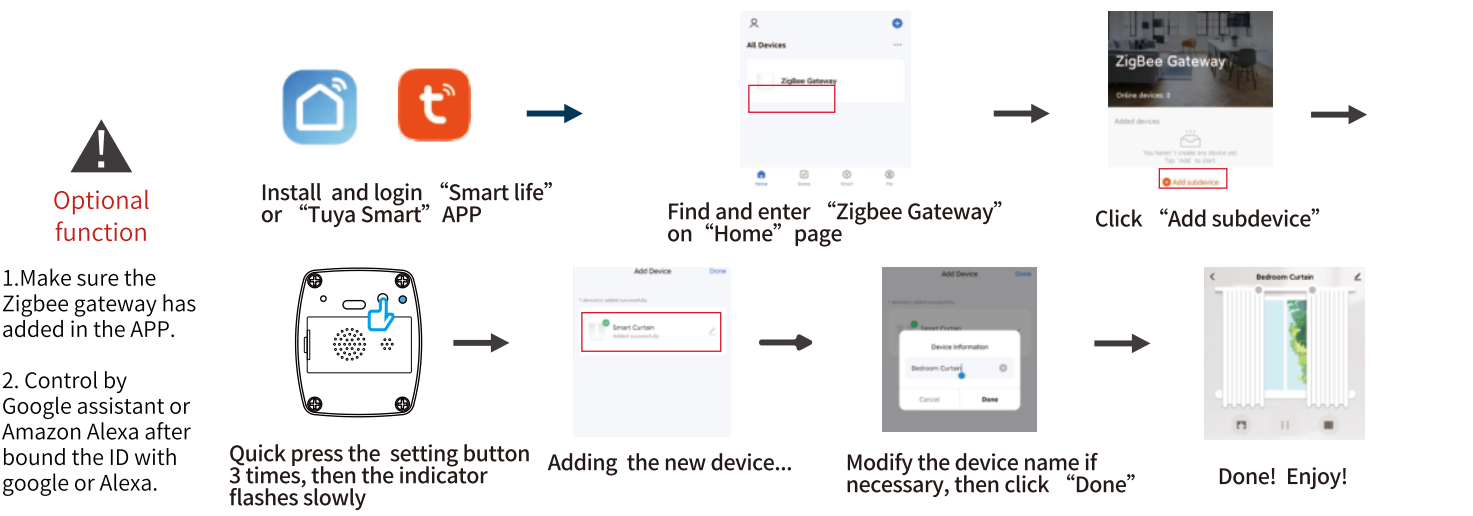
Stop/Pause



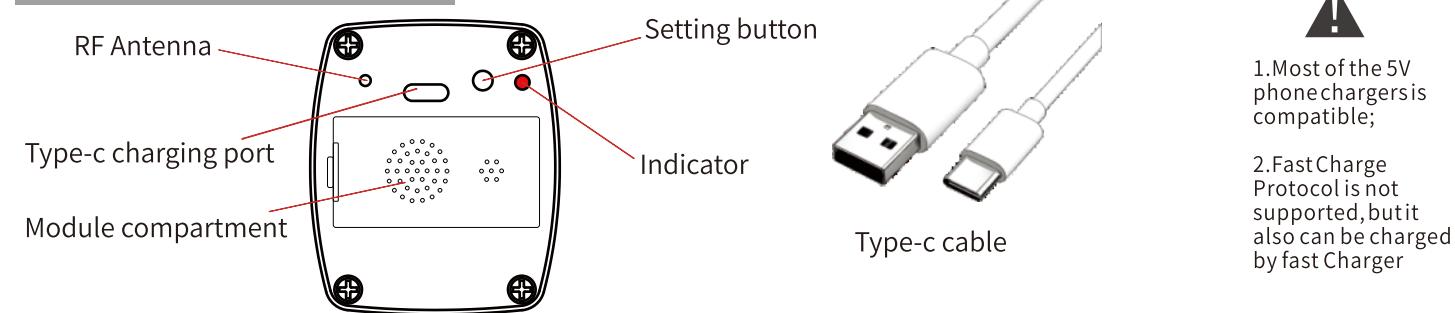
Function description

- 1. Soft start: When the motor is stopped, quickly pull the pulley in any direction for more than 5cm, and the motor will automatically run to the manual direction.
- 2. Stop when blocking: The motor will stop working to prevent the damage by blocking.
- 3. Electric stroke: The runner will slow down and stop before approaching to the terminal.
- 4. Stroke correction: The system will correct the stroke automatically when a stroke error is occurred.
- 5. Overtime protection: The motor will stop automatically when no operations for 4 minutes.
- 6. Over charging protection: The charging will stop automatically when full charged.
- 7. Low power alarm: The buzzer alarm will indicate when low battery.
- 8. Anti-trigger: The moving distance of soft start is more than 10cm if no stroke.

Tuya / Smartlife Zigbee



## Charging Instruction

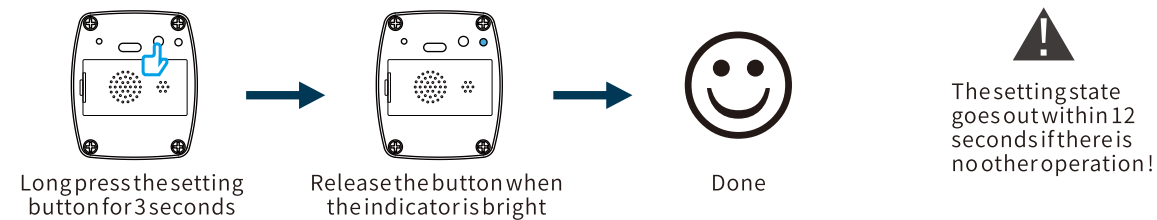


### Notes:

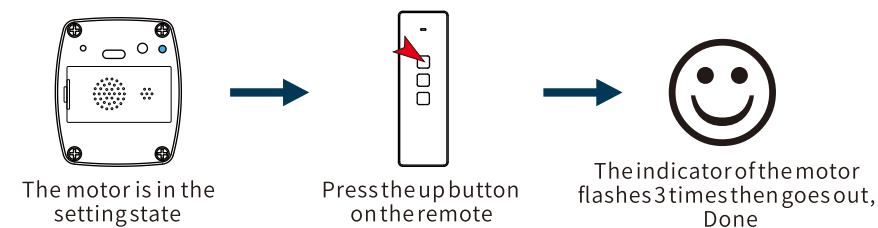
1. Please charge the motor with Type-C cable and make sure the output voltage of the charger is 5V;
2. The indicator of the motor is red when charging, and goes out when full charging

## Settings

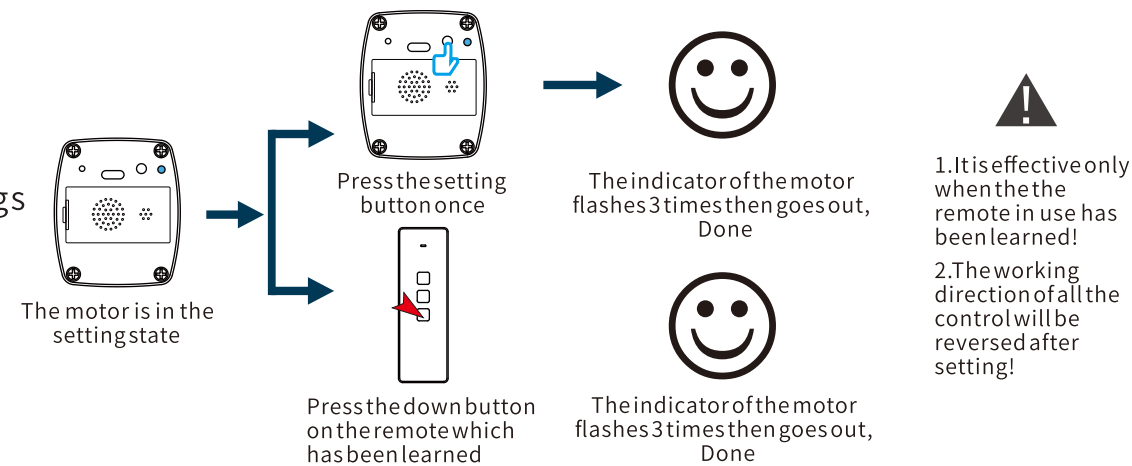
### Setting state



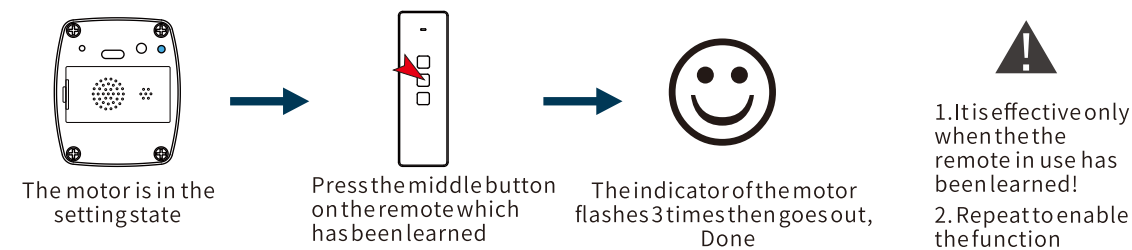
### Learn code



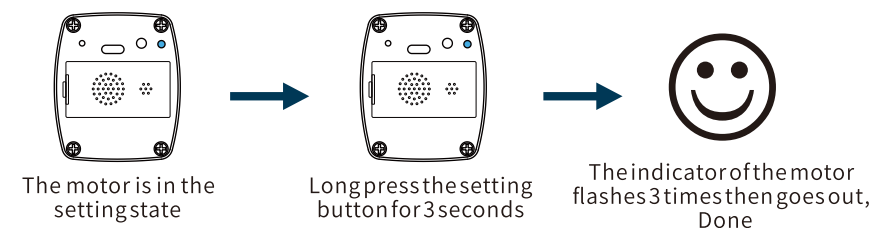
### Reverse Settings



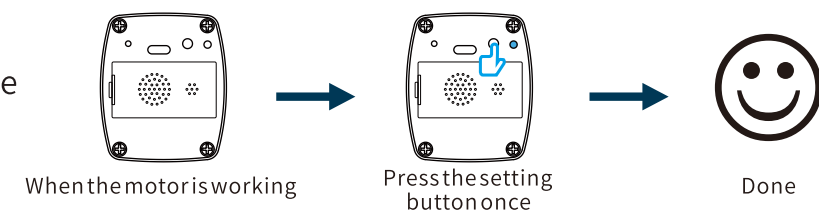
### Disable the softstart



### Reset (Clear Code)



### Stop/Pause



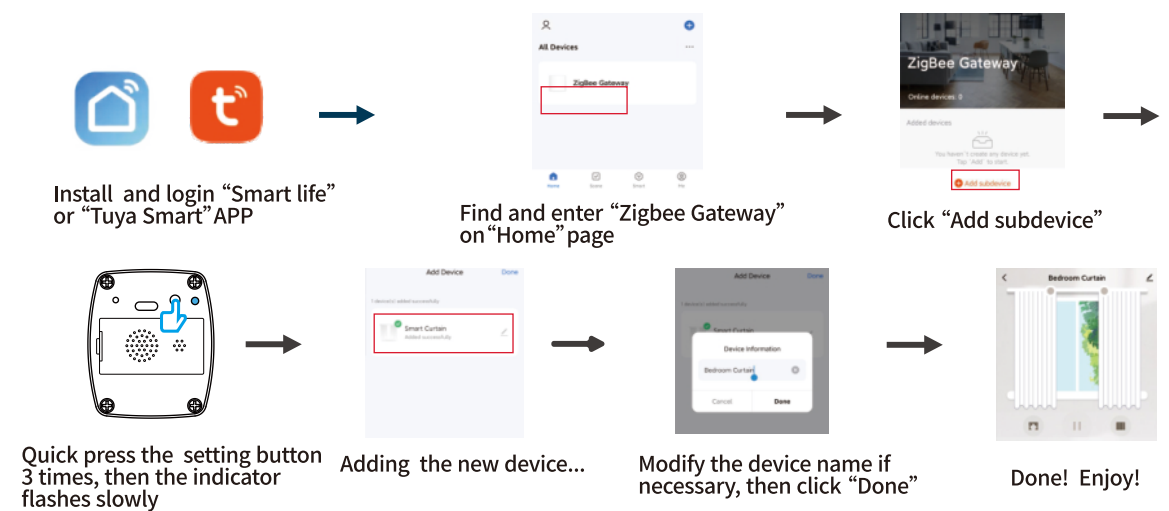
## Function description

1. Soft start: When the motor is stopped, quickly pull the pulley in any direction for more than 5cm, and the motor will automatically run to the manual direction.
2. Stop when blocking: The motor will stop working to prevent the damage by blocking.
3. Electric stroke: The runner will slow down and stop before approaching to the terminal.
4. Stroke correction: The system will correct the stroke automatically when a stroke error is occurred.
5. Overtime protection: The motor will stop automatically when no operations for 4 minutes.
6. Overcharging protection: The charging will stop automatically when full charged.
7. Low power alarm: The buzzer alarm will indicate when low battery.
8. Anti-trigger: The moving distance of soft start is more than 10cm if no stroke.

## Tuya / Smartlife Zigbee

### Optional function

1. Make sure the Zigbee gateway has added in the APP.
2. Control by Google assistant or Amazon Alexa after bound the ID with google or Alexa.



**IOTON<sup>®</sup>**



info@ioton.com



www.ioton.com