



Tuya Zigbee curtain motor

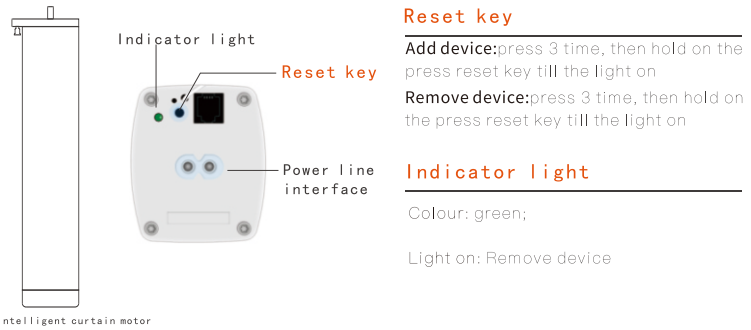
INSTRUCTIONS



— ABSORBED . INNOVATE . THE ACME —

According to the company's business development, the product may be adjusted from time to time, and the specific functions and contents may be adjusted dynamically. The company cannot guarantee that the relevant packaging and instructions updated in time. Customers please use in practical. The functions and contents shall prevail.

Structural description



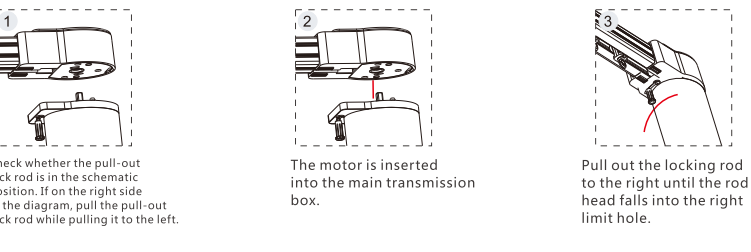
Basic parameters

Product model	ONE-M118	Radio frequency	2.4G/433MHz	Maximum width	12m
Rated power	35W	Maximum payload	50KG	Protection grade	20IP
Rated current	0.14A	Fuselage weight	1.05KG	Running time	>4min
Rated torque	1.2Nm	Operation noise	33dB	Working temperature	-10℃~50℃
Running speed	14cm/s	Minimum width	0.9M	Power line type	2 core
Working voltage	100~240Vac		50/60Hz		

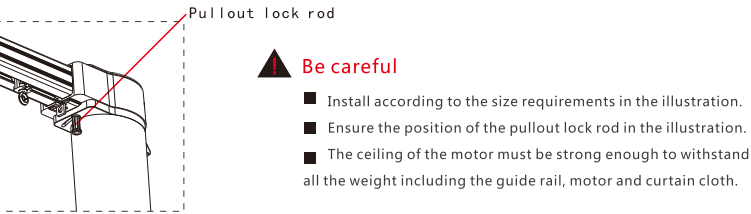
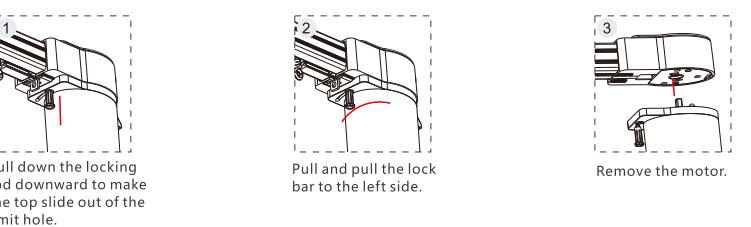
Functional characteristics

- Touch start function
- Power failure pull function
- Resistance And Stop Function
- Run gracefully
- Fabric rebound correction function
- Stroke fine tuning function
- Electronic memory limit
- Remote control
- Timing control
- Speech control
- Positive inversion settings
- Calibration function

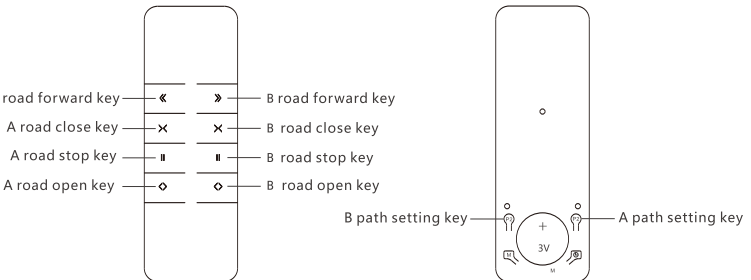
Motor installation



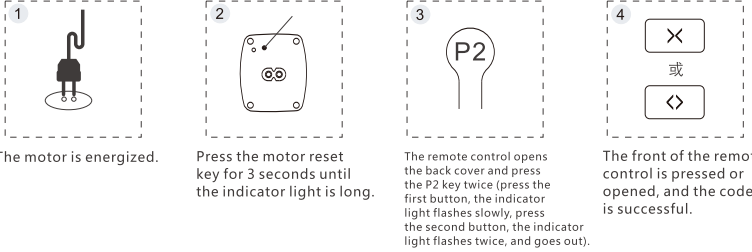
Motor disassembly



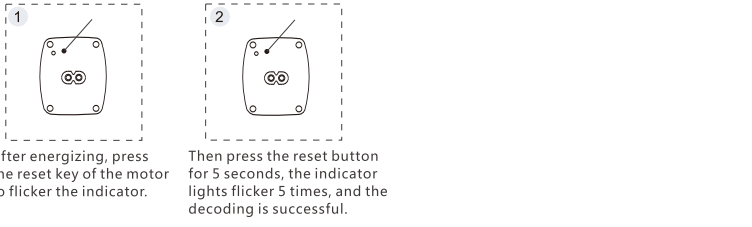
Remote control pair code



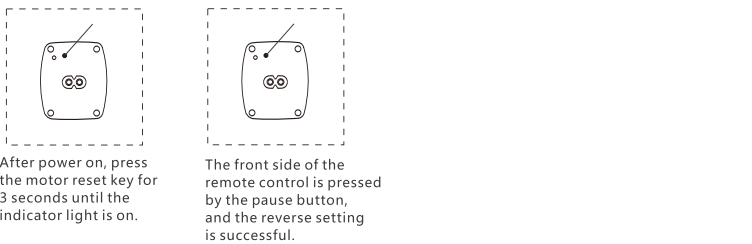
Motor and remote control counter code



Motor and remote control decoding

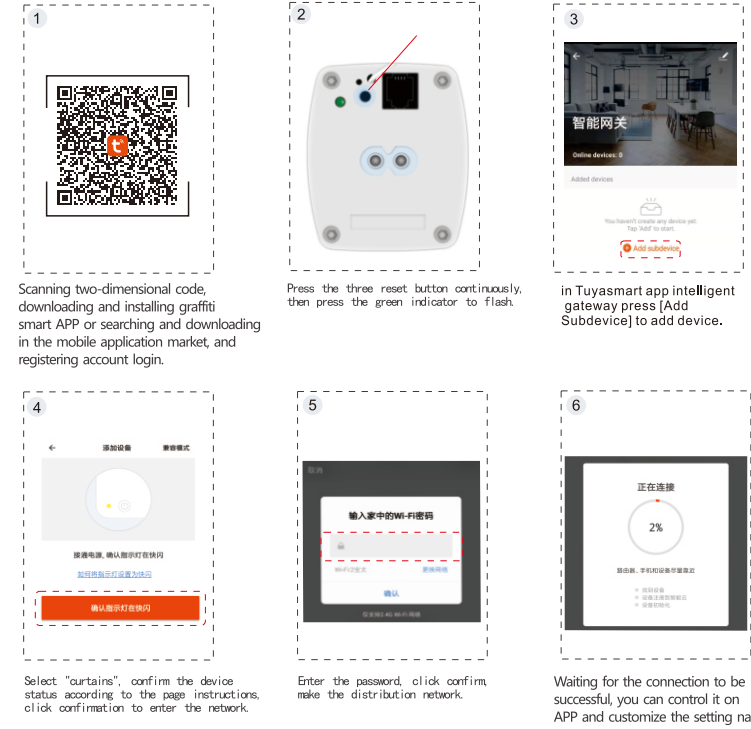


Commutation of motor operation



The product uses graffiti intelligent system control, please download graffiti smart APP.

Electric motor networking



The way to solve the net problem is

There are two ways to solve the intelligent switch network :

Method 1: on mobile APP, remove the device to be removed, click the upper right corner. Select "remove equipment";

Method 2: Release the curtain motor, press the reset key of the motor three times in a row, and then press it for a long time until flash, then the equipment will be relieved.

Device sharing:

Enter the device on graffiti APP and click on the top right side. Select "share device", then "add share", add the account you want to add to it.

Speech control method

Graffiti intelligent curtain motor supports a variety of voice box control: Tmall elves | Little love classmate | takki | Amazon | Google Home

1. intelligent curtain motor through "graffiti intelligence" APP networking.
2. bind the account of graffiti intelligence to the APP of each voice box, that is, the corresponding voice control.

Example 1: Tmall elf control

1. intelligent curtain motor through "graffiti intelligence" APP networking.
2. open the Tmall elf APP. Click on my "add device" to bind the platform account. Find "graffiti intelligence" to bind. After binding, you can control Tmall elf.

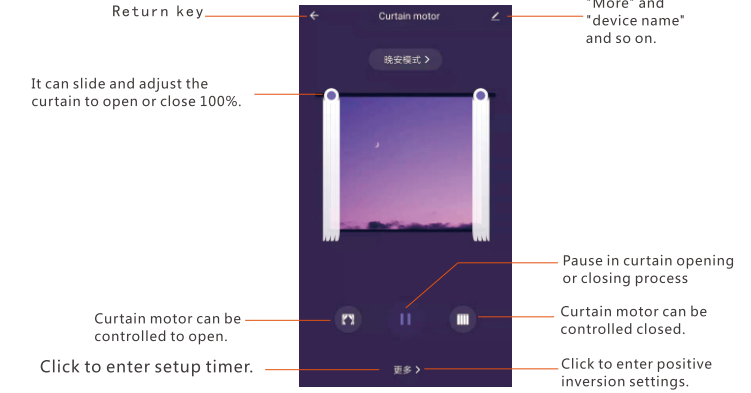
For example, 2: little love classmates control.

1. intelligent curtain motor through "graffiti intelligence" APP networking.
2. open "Mi Jia" APP. Click on "mine" — "Set up" — "Laboratory function" — "Third party platform" — Add "find" graffiti intelligence "to bind. After binding, you can control your classmates.

Inventory

1. intelligent curtain motor;
2. power cord.
3. a user manual.

Interface description



After sale policy

Three package provisions

1. Within 7 days from the date of your signature and receipt, if there is a performance failure of this product, the service center will confirm that it can enjoy free return or exchange services.
2. Within 8-15 days from the date of your signature, if there is a performance failure of this product, the service center will determine that it can enjoy free exchange or maintenance services.
3. Within 36 months from the date of your signing and receiving, the product has performance failures, which can be repaired free of charge by the service center.

Quality assurance performance failure

1. the product is not energized, or the power fails to start properly.
2. the key of the device can not be used normally.
3. the function of other products caused by other hardware failures can not be used normally.

Non warranty range

1. Unauthorized maintenance, misuse, collision, abuse, infusion, accident, alteration, incorrect use of non-product accessories, or tear, alter labels, anti-counterfeiting marks;
2. more than three packages are valid.
3. the damage caused by force majeure, such as fire, flood and lightning strikes, is not in line with the situation of failure.
4. failure of the product and accessories due to human causes.

Commitment and statement

The company guarantees that the products conform to the national standards. The company will not undertake any obligations for any declarations related to products that are not directly issued by the company.



info@ioton.com
www.ioton.com